



# MONTHLY MEMBERSHIP PROGRESS REPORT

District 202 F

Results as of: 02/28/2018

GMT: CLIFFORD HEYWOOD

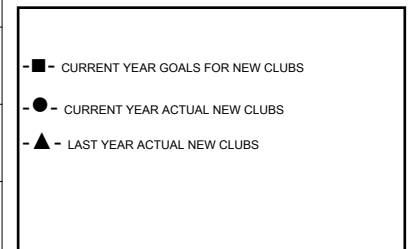
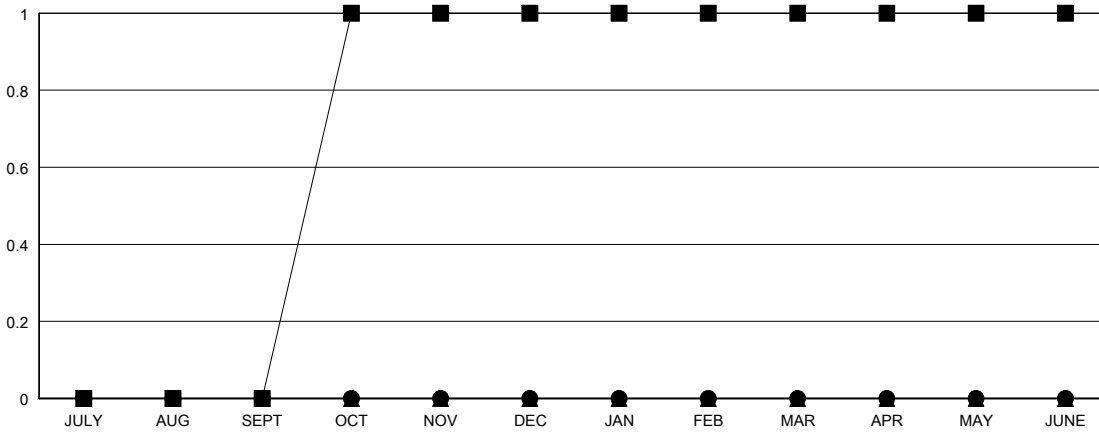
LOCATION NEW ZEALAND

GMT CA

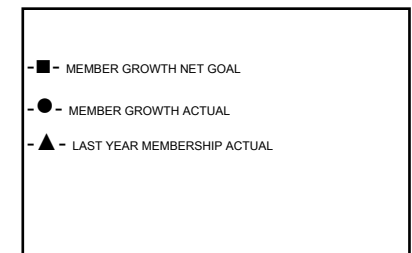
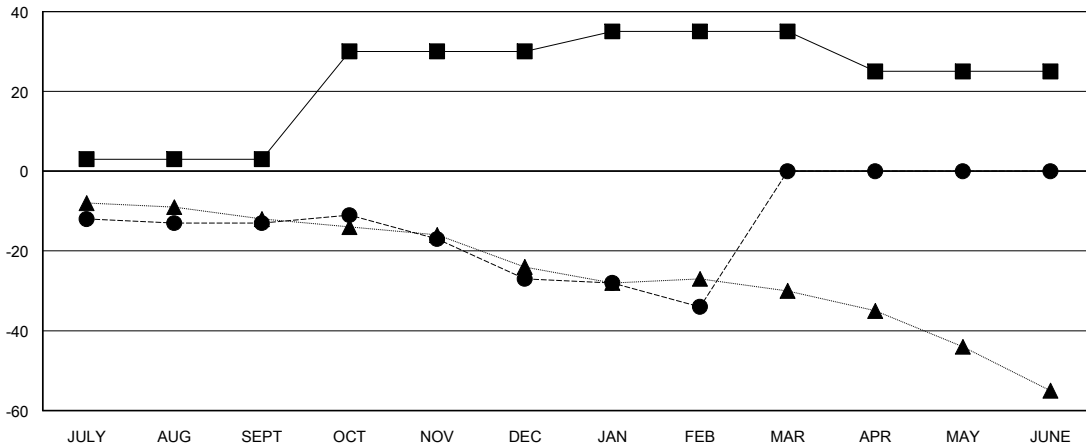
Clubs			
RESULTS FOR 2017-2018			
QUARTER	NEW CLUB GOAL	NEW CLUBS	DROPPED CLUBS
JULY/AUG/SEPT	0	0	0
OCT/NOV/DEC	1	0	0
JAN/FEB/MAR	0	0	1
APR/MAY/JUNE	0	0	0

Members			
RESULTS FOR 2017-2018			
QUARTER	MEMBER GROWTH NET GOAL	MEMBER GROWTH ACTUAL	DROPPED MEMBERS ACTUAL (including transfers)
JULY/AUG/SEPT	3	27	34
OCT/NOV/DEC	27	32	36
JAN/FEB/MAR	5	5	11
APR/MAY/JUNE	-10	0	0

GOALS AND ACTUAL NEW CLUBS CUMULATIVE



GOALS AND ACTUAL MEMBERS CUMULATIVE



DROPPED CLUBS: 1	26 CLUBS OF 48 ADDED 1 OR MORE NEW MEMBERS	<u>GENDER DISTRIBUTION</u> MALE 918 (65.90%) FEMALE 475 (34.10%) Women Percentage Fiscal Year Goal: 38%
<u>DROPPED MEMBERS</u> DECEASED 10 CLUB CANCELLED 0 OTHER 71 TOTAL 81	<a href="#">CLICK HERE FOR CUMULATIVE MEMBERSHIP DATA</a>	TOTAL FAMILY UNIT MEMBERS 59 FAMILY MEMBERS PAYING HALF DUES 30